

Sentinel 2B: Belgian know-how soon in orbit to protect and serve the people

On March 7th, the Sentinel 2B satellite will be launched from Kourou, French Guiana, to be placed on the same orbit as its twin brother, Sentinel 2A, launched back in June 2015. Sentinel 2B will supply images of land surfaces for the benefit of the European environment surveillance program, Copernicus. It will carry a set of optical instruments dedicated to Earth observation. Among them, a multispectral camera (MSI) capable of recording Earth's landscape changes in a dozen different colors.

Sentinel 2B will be placed on the same orbit as Sentinel 2A, but separated by 180°. Every five days, the satellites will jointly cover all land surfaces in order to gather precious data which will be made available for free to users worldwide to improve agricultural practices, to monitor the environment and to mitigate the effects of natural disasters.

AMOS, located in the Liège Science Park, in Belgium, is a key supplier for this type of space missions. The company provided the 3 mirrors of the MSI instrument telescope on board the Sentinel 2A and 2B satellites. AMOS realized the polishing and the shaping of the silicon carbide blanks supplied by AIRBUS Defense & Space and aligned the telescope. The dichroic blades, which allow the separation of the visible and infrared channels of the instrument, have also been manufactured by AMOS.

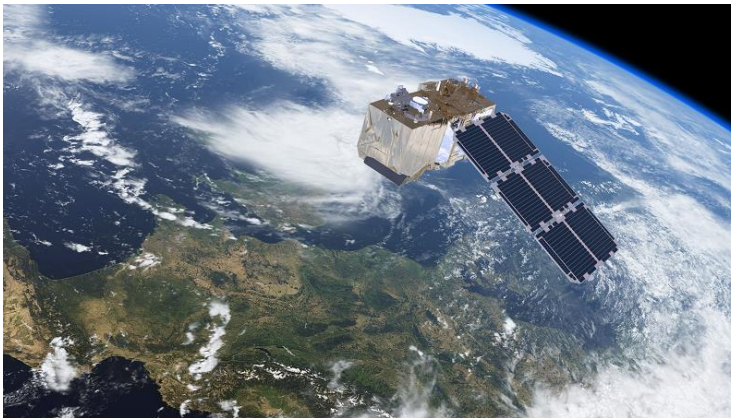
As Philippe Gilson, AMOS CEO, points out: « AMOS, a high-tech Walloon SME, has become a privileged and reliable partner of Airbus Defense & Space for space optics. Airbus does not hesitate to entrust critical elements of its missions to the know-how of our engineers, technicians and workers. As a matter of fact, we have already begun the production of the Sentinel 2C and 2D optics which will soon join Sentinel 2A and 2B in orbit. »



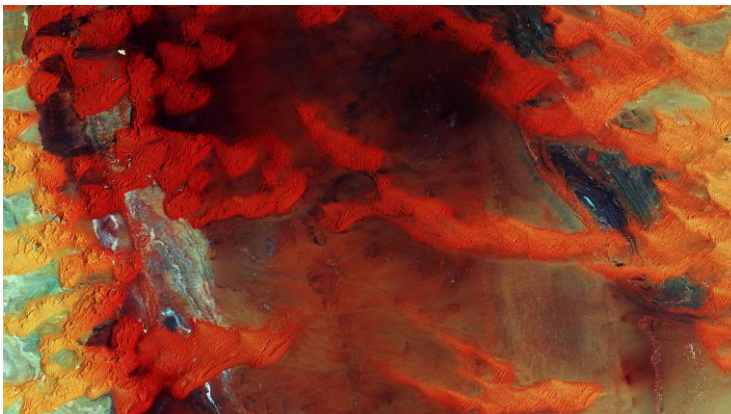
Sentinel 2B optics under manufacturing in the AMOS optical workshop



Sentinel 2B encapsulation in the Vega fairing (Copyright ESA)



"Sharp eyes on Earth" (Copyright ESA/ATG medialab)



Libyan dunes, by Sentinel-2A (Copyright ESA/ATG medialab)

More info :

http://www.spacedaily.com/reports/Sentinel_2B_satellite_ready_for_launch_from_Kourou_999.html

http://m.esa.int/Our_Activities/Observing_the_Earth/Copernicus/Sentinel-2/Call_for_Media_launch_of_Sentinel-2B_satellite_for_Copernicus

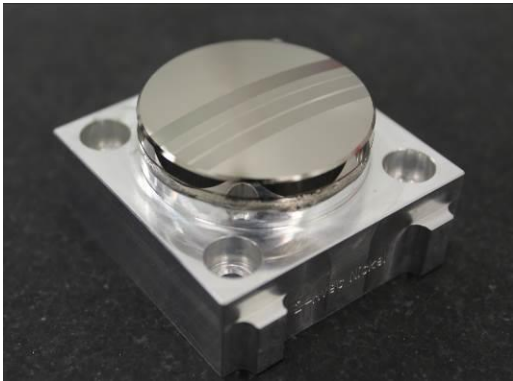
http://www.esa.int/fre/ESA_in_your_country/France/Lancement_du_satellite_Sentinel_2B_de_la_constellation_Copernicus

AMOS in a few words

Located at the heart of the “Liege Science Park” in Sart Tilman, Liège, Belgium, AMOS has been designing and building high-precision optical and mechanical custom equipment for more than 30 years. Its flagship achievements are professional telescopes, terrestrial or space optical systems, test equipment for space devices, and high-precision mechanical equipment. It occupies today more than 100 employees highly skilled in advanced technologies and offers services to the space industry and to the professional astronomy sector.

AMOS’ turnover in 2016 was 18 million Euros, with more than 90% for export.

The company has most of its customers in Europe (ESA, ESO, AIRBUS DEFENSE & SPACE, THALES ALENIA SPACE, OHB), in the United States (AURA), in India (ISRO, PRL, ARIES), and has recently expanded its business in countries like China, Turkey or Russia.



Hyperspectral Imaging Spectrometer component for the ISRO lunar mission Chandrayaan II



Thermal-vacuum Test Facility for VSSC (ISRO)



ATS (Auxiliary Telescope Systems),
“mobile” telescopes of the VLTi in Chile (Cerro Paranal)

Liens utiles :

www.amos.be

Contact :

Mr Xavier VERIANS – Business Development Director

xavier.verians@amos.be

+32 4 361 40 40